

## Ontrol N4 Sedona driver & programming tool

To program a Sedona device, you connect to it through a running Niagara station.

- If the Sedona device is on a remote Jace, you simply open the remote station.
- To program a Sedona device directly from your Workbench, you will need to run a station on your local PC.

In either case, the station will need to be able to access Sedona kit and platform files. Therefore, you need to copy these files to one or more locations as per instructions below.

### Installation on Workbench

You need to copy sedona files to two locations:

- {Workbench User Home}/shared
- {Daemon User Home}/shared

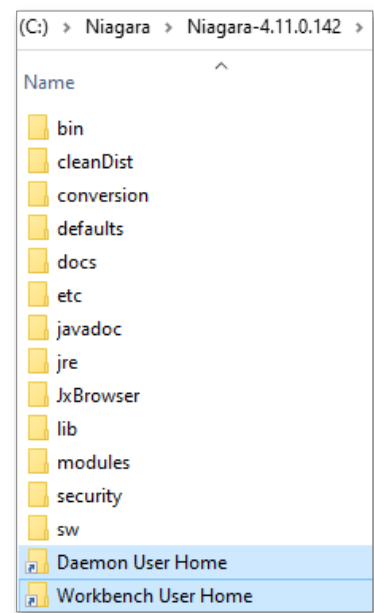
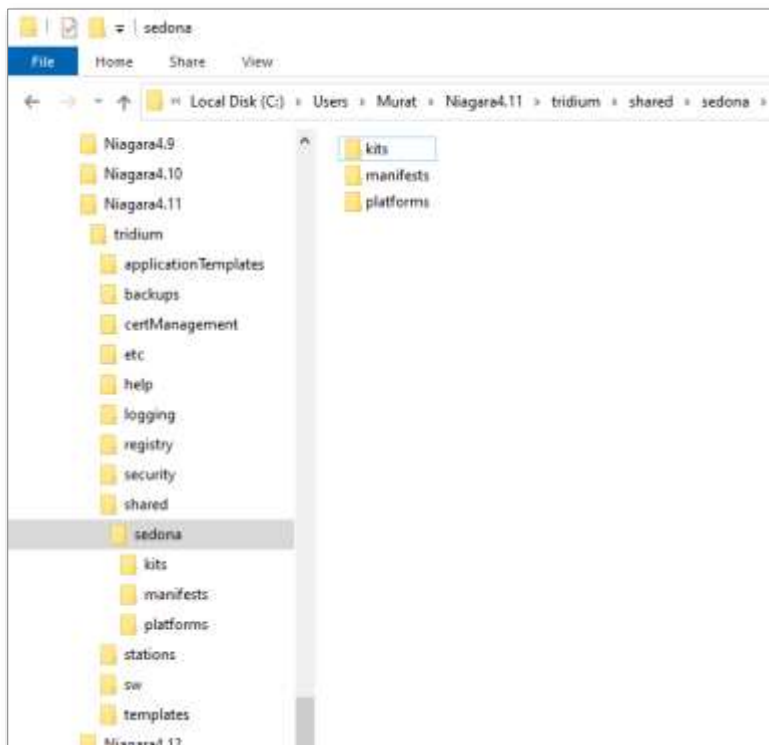
There are shortcuts to both these locations in your Niagara installation. →→

You may need to create the the '/shared' folder if it doesn't exist.

The copied files should include:

- Platform files for the device you are connecting to.
- Kit and/or manifest files for the kits used in the app you are connecting to.

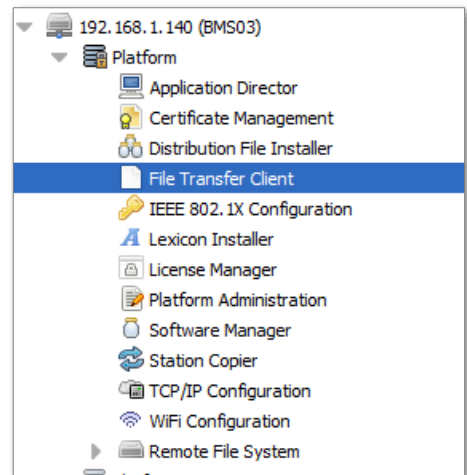
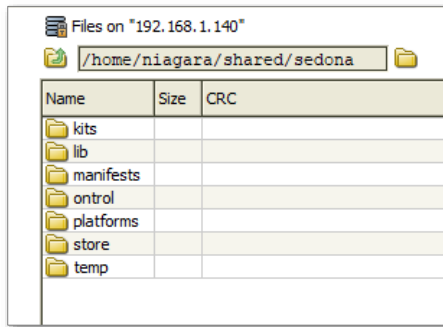
The directory structure is the same as in an AX sedona installation. ↓ ↓



## Installation on a JACE

A station running on a Jace also needs the sedona files for functioning. Use the File Transfer Client under Platform to copy files to a remote Jace. →→

Copy the kit and platform files to the remote station's "/home/niagara/shared/sedona" folder:



## Running a station on the local PC

To program a sedona device directly from your workbench, you connect to it through a running Niagara station. Therefore, you need to start a station on your engineering PC. Once you have that:

- Add a SedonaNetwork to the Drivers folder.
- Discover and add your Sedona device (if the device doesn't support discovery, you can also add it manually).
- In the navigation pane, expand the sedona device and navigate down to 'SoxClient'
- Expanding beyond that, you'll find the 'Sedona Tools' and 'Sedona Gateway' headings.
- 'Sedona Gateway' allows access to property-sheet, wire-sheet views of the app running within the sedona device.
- 'Sedona Tools' contains tools for back up, restore and kit management:

